



IQ QUATTRO CABLE DUCT SYSTEM



IQ QUATTRO Cable Duct System

Multichannel system for cable routing

Description & Application

The IQ Quattro Cable Duct System is used for the protection and bundling of cables in underground infrastructure.

The system is available in multiple configurations (4-way, 4-way XL, 6-way, 9-way) and can be adapted to project-specific geometry and capacity requirements.

It is suitable for telecom, power, and signal cables where flexibility and fast installation are essential.

Key Features

- Quick and easy installation
 - Supports multiple cable types and capacities
 - Flexible routing and layout
 - Long service life with minimal maintenance
-

Applications

- Telecom and power infrastructure
 - Bridges, tunnels, and road construction
 - Data centers and utility projects
 - Industrial and energy facilities
-

Standards and Documentation

- EN 124 – Load testing
 - ISO 9001 – Manufacturing standard
 - ISO 9969
 - Tested for structural strength, sealing integrity, and service life
-

Technical Specifications

Parameter	Specification
Material	HDPE (High-Density Polyethylene)
Construction	Multichannel design with push-fit jointing system
Configurations	4-way, 4-way XL, 6-way, 9-way
Compatible duct types	Ø110–160 mm standard cable ducts
Load capacity	Tested according to EN 124
Temperature range	-25 °C to +80 °C
Corrosion resistance	High resistance to moisture, oil, and chemicals
Installation	Push-fit jointing – no welding required
Certifications	EN 124, ISO 9001



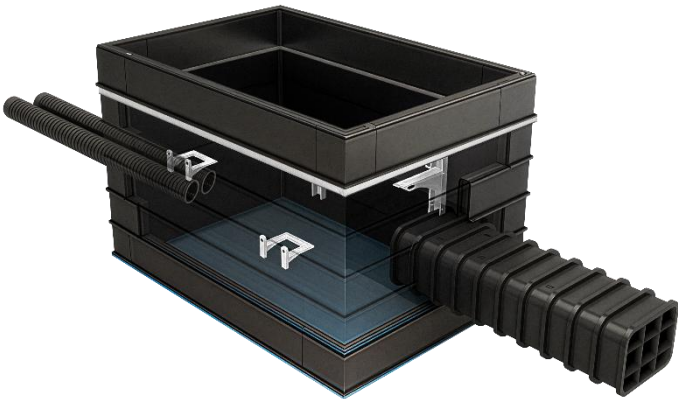
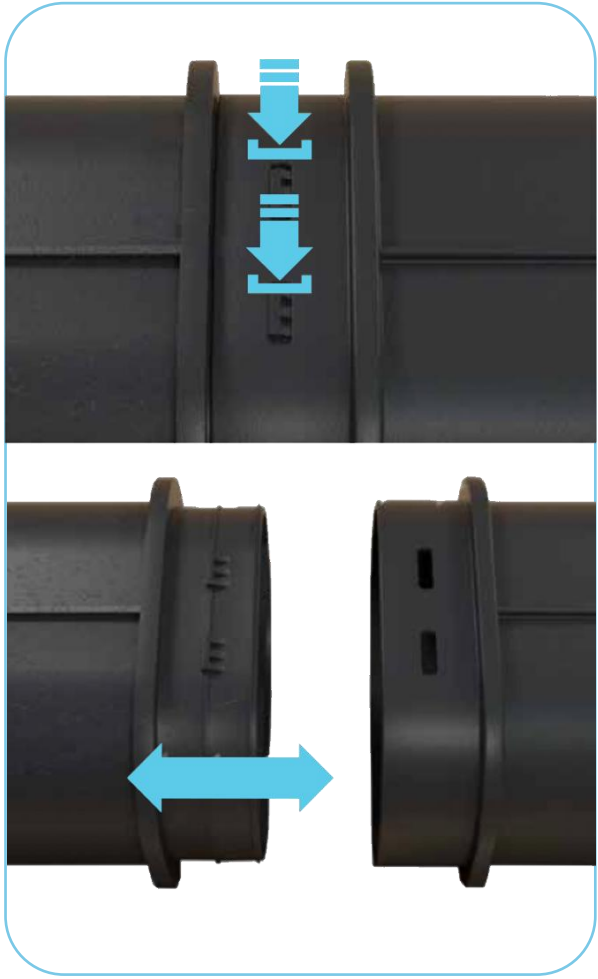
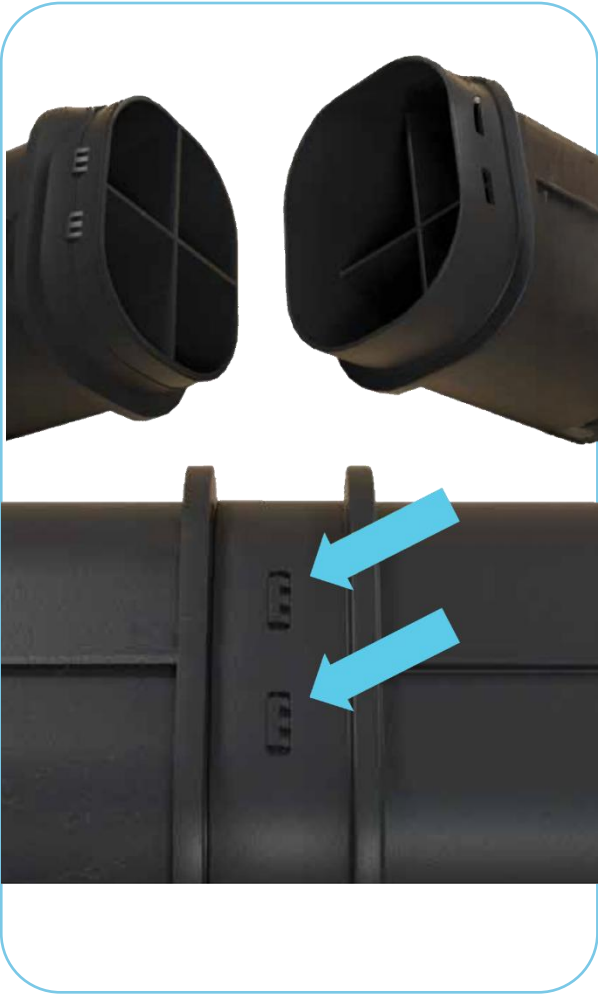
Size Overview – IQ Quattro Cable Duct System

Product name	Internal dimensions (mm)	External dimensions (mm)	Length (mm)	Weight (kg)
IQ Quattro 4 Way	206x206	248x248	1050	8
IQ Quattro 4 Way XL	306x306	348x348	1065	10,5

IQ Quattro 6 Way	206x312	248x348	1065	10,5
IQ Quattro 9 Way	312x312	354x354	1065	15,5

Installation – Plug & Play

The Quattro system is assembled using a plug-and-play click system, ensuring fast and secure installation. The integrated locking mechanism ensures correct positioning of the components and allows assembly and disassembly without the use of special tools, simplifying installation, service, and replacement. The images below illustrate the assembly principle.



IQ QUATTRO Fittings *The image illustrates the IQ Quattro installed on the IQ Futura Modular Chamber System

For all sizes of the IQ Quattro Cable Duct System, a complete range of fittings is available to ensure correct installation, termination and transition between IQ Quattro cable ducts and standard round pipes.

The fittings are designed to provide a precise, robust and reliable connection, supporting efficient installation and long service life – even in complex or space-restricted infrastructure environments.

All fitting variants are available in all sizes.

Fittings for the IQ Quattro Cable Duct System are supplied as special items. For ordering and technical advice, please contact your UniSeals representative.



Socket/Spigot Reverse



Quattro Bend (eksempelvis 15°)



Socket/Spigot End Cap



Single Duct Adapter

CONTACT US OR VISIT
WWW.UNISEALSIQ.COM FOR
DETAILED UNISEALS
IQ PRODUCT INFORMATION
AND CONTACTS.

